

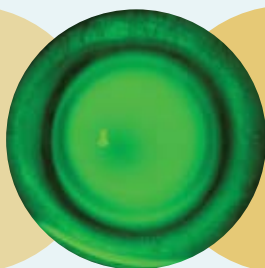
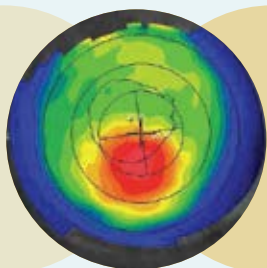
Specialty Contact Lens

Mini-Fellowship Overview

At Vance Thompson Vision, our mini-fellowship education opportunities are specially designed to give primary eye care providers keen insight into the surgical and medical standards core areas of focus. The following outline describes some of the material covered throughout the mini-fellowship specifically designed for specialty contact lens training.

I. Grand Rounds Over Breakfast

Review of the day
VTV Philosophies
Setting Expectations
Q&A



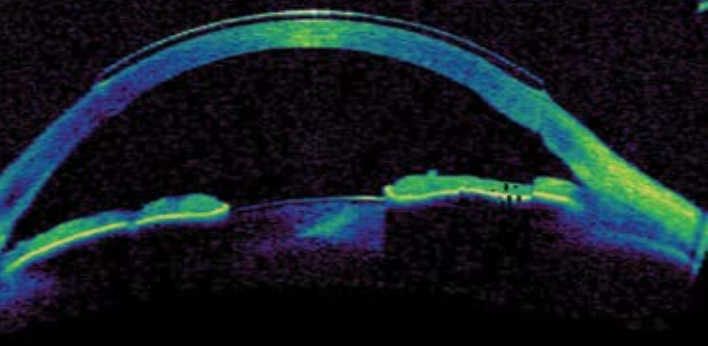
II. Pre-fitting Process

Pre-fitting Testing

1. Topography
2. Anterior Segment OCT

Pre-fitting Discussion

1. Specialty Contact Lens Options
2. Relative Contraindications
3. Setting Expectations



III. Fitting Process

Scleral Contact Lenses

1. Reverse Geometry
2. Standard (16-20 mm diameter)
3. Mini-Scleral

Specialty Soft Contact Lenses

Kerasoft IC

Hybrid Contact Lenses

1. Synergeyes UltraHealth
2. Synergeyes PS
3. Synergeyes A
4. Synergeyes ClearKone



Rigid Gas Permeable Lenses

1. Reverse Geometry
2. Standard (9.0 - 9.5 diameter)

IV. Post-fitting Process

Follow-up
Complications
Solutions



Objectives

- Develop a friendship and better working relationship with participant
- Help participant develop a more in depth understanding of all available specialty contact lenses offered
- Help participant in specialty contact lens selection for patients based off of topography and anterior segment OCT
- Help participant develop a strong comfort level with managing post fitting complications and follow-up

